

A Local Information System for Wigan Borough Partnership

The journey from initial concept to reality

Steve Lyon
Business Intelligence Systems Development Officer
Chief Executive's Services
08/10/08



Home

You are logged in as :
s.lyon
@wigan.gov.uk.

- [Home](#)
- [Explorer](#)
- [Reports](#)
- [Data Views](#)
- [Advanced Data Views](#)
- [Help](#)
- [Logout](#)
- [Update Password](#)
- [Site administration](#)

Welcome to W.I.S.D.O.M.

Wigan's Information System of Dynamic Online Maps (W.I.S.D.O.M.) provides easy access to statistics at a variety of spatial levels including Lower Super Output Area, Ward, Police Beat and Township. The statistics cover a range of themes including deprivation, demographics, health and social care, education and skills, housing, economic activity, crime and disorder, leisure and culture and the environment.

W.I.S.D.O.M. is being developed by core partners operating under the Wigan Borough Partnership umbrella including: [Wigan Council](#) , [Ashton Leigh and Wigan Primary Care Trust](#) , [Wigan and Leigh Housing and Wigan Leisure and Culture Trust](#).

Your Tools > Move your mouse over these buttons for functions



The following modules are available:

- 1. Explorer:** Allows you to find out what reports and data are available on the system. You can search by keyword and retrieve details of all data and reports that are currently available. You can also download whole datasets easily.
- 2. Reports:** Allows you to quickly produce a summary area profile report for an area of interest. Reports are built by your Administrator and summarise key characteristics of areas in text, tables and charts.
- 3. Data Views:** Allows you to explore and investigate key pre-defined sets of data using an exciting combination of interactive maps and charts. You can also create custom tables for the same collections of indicators and download those of interest.
- 4. Advanced Data Views:** Allows you to create custom tables comprising any indicators held in the system. You can then export

Quick Report

Enter Postcode e.g. WN1 1YN

Go

[Take me to Reports](#)

Latest W.I.S.D.O.M. news...

19 August 2008
[New datasets released](#)

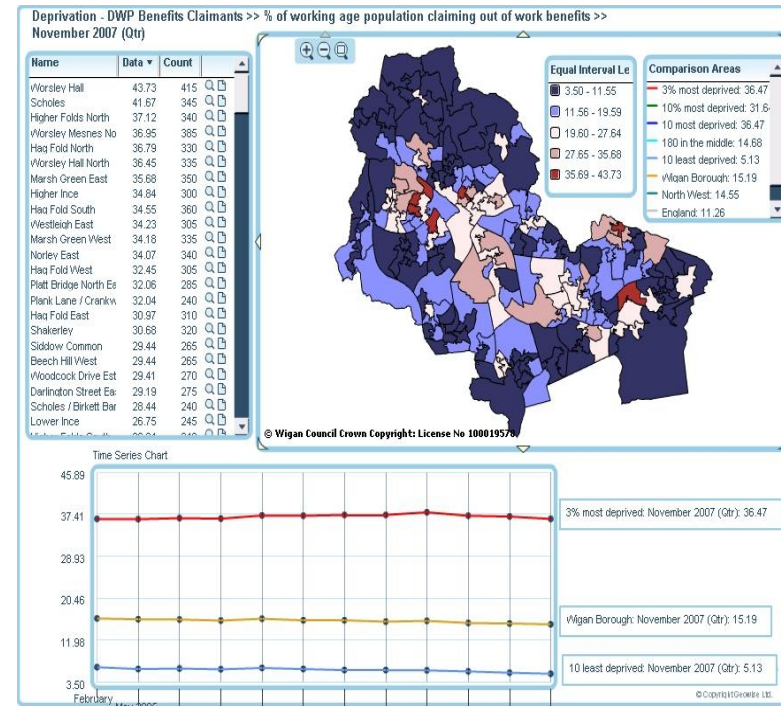
14 August 2008
[New modules coming soon to W.I.S.D.O.M.](#)

22 July 2008
[Latest DWP Job Seekers Allowance data released to June 2008](#)

07 July 2008
[Latest DWP Benefits data released to Nov 07](#)

Webinar contents

- How did it all start?
- An early solution
- Options appraisal for a L.I.S.
- Why we chose instantatlas dataserver
- Who did we get involved?
- What steps have we taken?
- Live demonstration of WISDOM
- Benefits we are starting to see
- Future plans
- Your questions



How did it all start?

LSP partners realised we needed a robust evidence base to support:

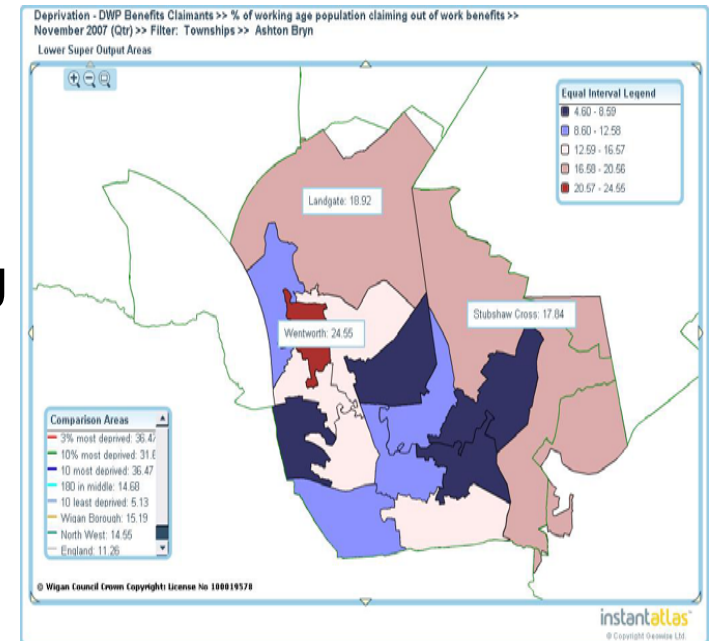
- Needs Assessments e.g. JSNA
 - Strategies e.g. Sustainable Communities Strategy, Joint Public Health Strategy
 - Strategic commissioning
 - Local Area Agreement
 - Local level delivery plans (Townships and PACTs)
 - Voluntary and community groups wanting to develop funding bids
-
- 2006 Local Government White Paper highlighted important role of L.I.S.
 - Comprehensive Area Assessment
 - LSP partners recognised they weren't sharing data very efficiently or effectively through existing systems
 - Strong business case to procure and develop an L.I.S.

An early solution

- SMART Neighbourhoods - NRF funded project (Apr 06 – Dec 07)
- Aimed to establish a sustainable *knowledge management* system for priority neighbourhoods and deploy it to improve their position relative to the rest of the Borough and in the national context.
- Objectives:
 - Use all sources of empirical data and information
 - Commission extra data gathering to fill in the gaps (without delay)
 - Support and utilise local intelligence - from paid staff and from local people
 - Co-ordinate the effective use of information by local staff and organisations
 - Collect, collate, analyse and feedback on all sources of local data quickly
 - Establish a model for local baselines that can be implemented in neighbourhoods with comparative ease
 - Bring together all key research and information resources (officers) into a co-ordinated approach
 - Support projects and services to use evidence based approaches
 - Share data between all relevant services and organisations at a neighbourhood level
 - Bring real "clout" to delivery by using latest up to date neighbourhood information to challenge and change mainstream delivery and with the full backing of the LSP Board, utilising NRF and LAA resources as catalysts

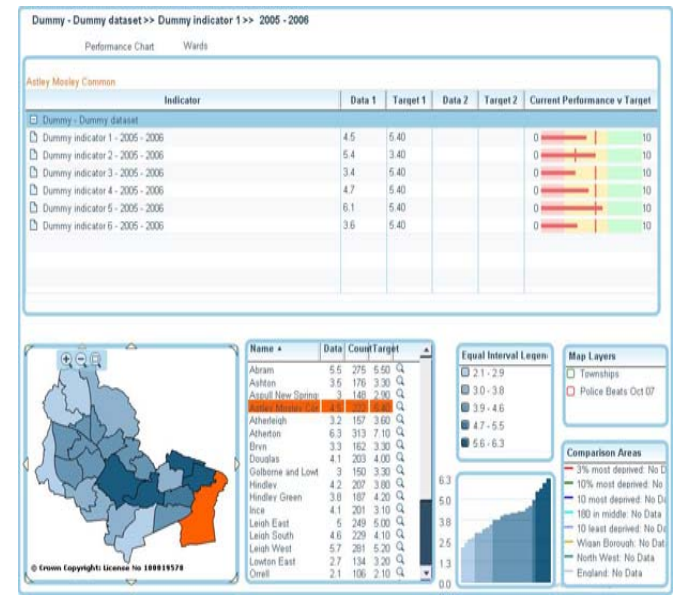
Options appraisal for a L.I.S.

- What we did:
 - Reviewed good practice material
 - Attended L.I.S. network events
 - Joined L.I.S. forums
 - Liaised with managers/staff of existing L.I.S. systems
 - Developed essential and desirable criteria lists
 - Supplier presentations
 - Installed and tested free trial versions of software
 - Produced options appraisal report for Senior Management Teams



Why we chose instantatlas dataserver

- Functionality
- Accessibility
- User friendly
- Easily customisable
- Can have several content administrators (data uploaders) and not be constrained by organisation or office location
- Potential to implement relatively quickly
- Good software support
- Cost effective

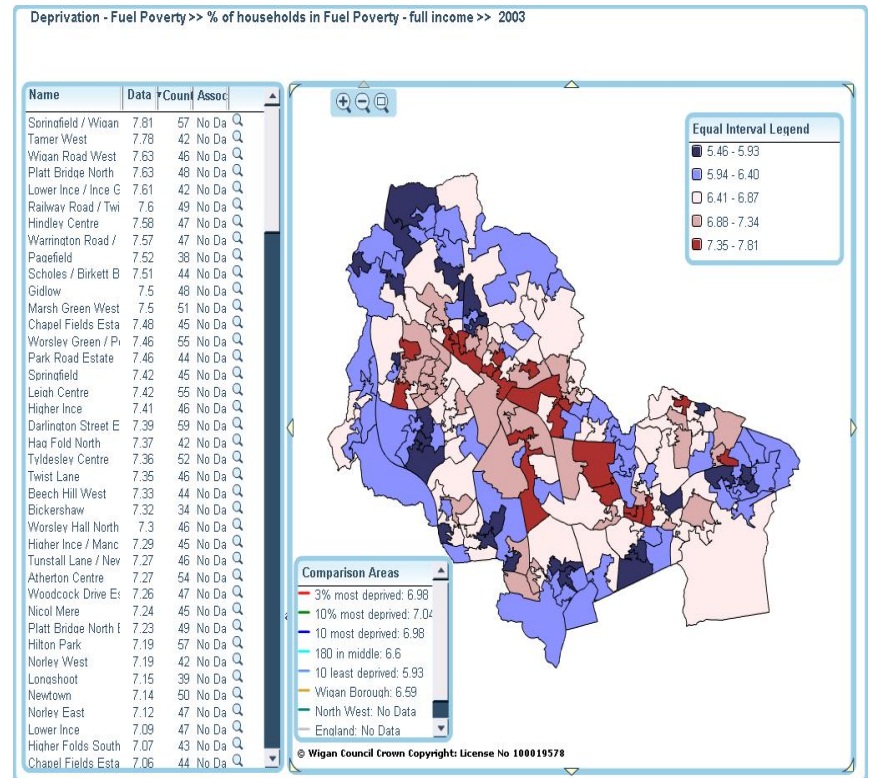


Who did we get involved?

- WISDOM Board made up of senior managers from each LSP core partner:
 - Wigan Council
 - Ashton Leigh and Wigan Primary Care Trust
 - Wigan and Leigh Housing
 - Wigan and Leisure Culture Trust
- One Project Coordinator
- Analysts come from different partner organisations and work virtually
- GIS people
- Council I.T. Dept

What steps we have taken

- Questionnaire sent to potential users to ask what they want out of the system
- Project Plan
- Indicator Action Plan
- Defined geographies and created look up tables
- Test site and live site
- Software purchase and installation
 - bought modules in stages
- Analyst training
- User training
- Lots of communications



Live demonstration

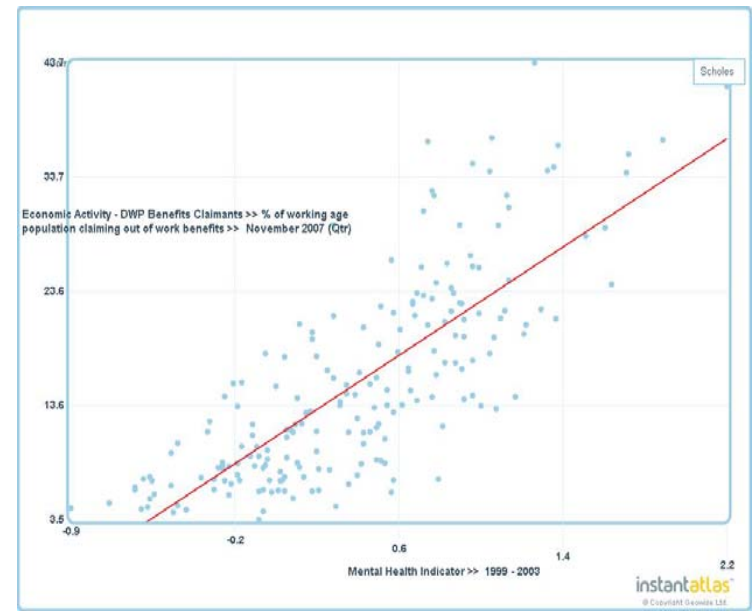


Benefits we are starting to see

- Greater efficiency and effectiveness achieved through:
 - Reduced duplication of effort
 - Shifting focus from collecting data to analysing it
 - Reduced amount of time compiling static reports
 - Reduced requests for adhoc data
- A shared understanding of what intelligence we have access to leading to improved partnership working
- Data held in a broader range of geographies
- Developing better needs assessments
- Using sub district analysis as contextual information to support traditional style of performance reporting
- Wide range of users

Future plans – discussion

- Using WISDOM to support strategic assessments e.g. JSNA, Economic Assessment. Housing assessment.
- Interoperability:
 - Trial pulling of data from ONS NeSS?
 - Pull National Indicator Set data from Data Interchange Hub?
- Develop linkages with PMS
- Make system available to public



Thanks for watching

Your questions?

I will try to answer your questions off line if we don't get chance now.



s.lyon@wigan.gov.uk