



# Using Geographic Drill Downs in InstantAtlas™

## Table of Contents

1. Introduction .....	1
2. Folders and Dynamic Reports .....	2
3. The Drill Down Script .....	2
4. InstantAtlas Support.....	3

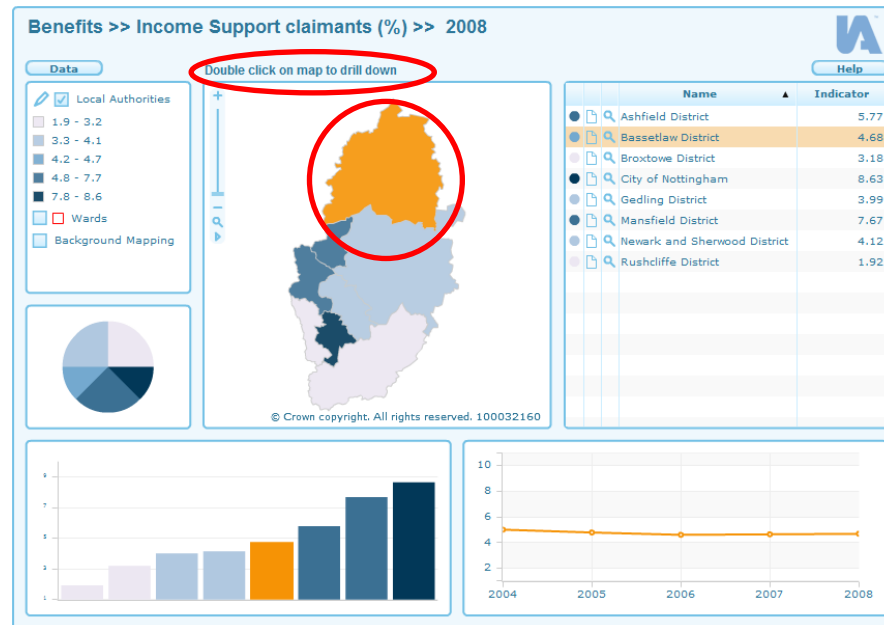


## 1. Introduction

The objective of this guide is to help InstantAtlas Desktop users set up area-specific geographic drill downs.

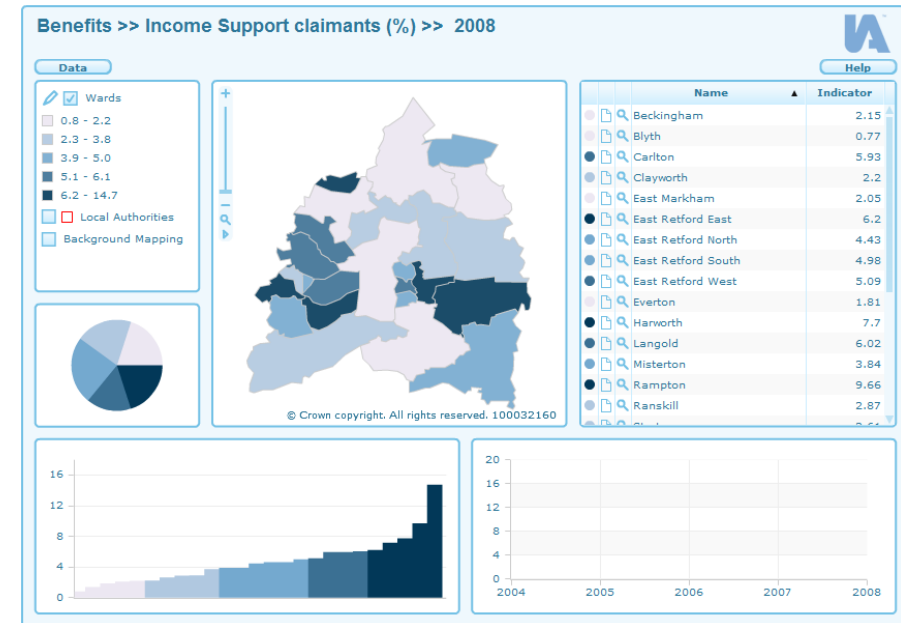
For example, the top level dynamic report might display a thematic map for districts in Nottinghamshire (Figure 1).

Figure 1



When an area is double clicked in the top level dynamic report, a new dynamic report opens displaying a thematic map for more detailed areas (e.g. wards) within the selected district. This example is illustrated in Figure 2 for the Bassetlaw District (highlighted in Figure 1).

Figure 2



This user guide will explain how to setup drill-downs within InstantAtlas. This functionality can be implemented in all Flash templates (Single Map, Double Map, Double Map Time Series, Area Profile and Bubble Plot). It is a known software issue that the second map of the Double Map and the Double Map Time Series template will not react when double-clicked.

To enable this function a custom script will need to be copied from this document and pasted to replace the script in the dynamic atlas.html file of your top level dynamic report (i.e. the dynamic report you wish to link from). This is explained in further detail in section 3 of this document.

## 2. Folders and Dynamic Reports

For a drill down to work correctly it is important that you organise and name your folders correctly. The easiest way is to place the dynamic reports you are drilling down to in subfolders within the folder that contains the top level dynamic report. These subfolders require a specific name so that they can be linked to correctly when the drill-down function is triggered. The name of each subfolder must be the same as the code of the geographic feature in the top level dynamic report that is used to drill down to that dynamic report. The codes of geographic features in the top level dynamic report are listed in the geographies.csv file created when the top level dynamic report was published.

Figure 3 shows the partial contents of the folder containing the top level dynamic report:

Figure 3


Name	Date modified	Type
atlas.html	11/11/2009 13:51	Firefox Document
atlas.swf	11/11/2009 09:53	SWF File
config.xml	11/11/2009 14:40	XML File
contextualLayer1.swf	11/11/2009 09:53	SWF File
data.xml	11/11/2009 14:33	XML File
data-xml-2-html.xslt	11/11/2009 09:53	XSL Transform
default.css	11/11/2009 14:40	Cascading Stylesh...
geographies.csv	11/11/2009 09:53	Microsoft Office E...
help.htm	11/11/2009 09:53	Firefox Document
logo.png	11/11/2009 09:53	Portable Network ...
map.svg	11/11/2009 09:53	SVG File
map.swf.xml	11/11/2009 09:53	XML File
map1.swf	11/11/2009 09:53	SWF File
notes.htm	11/11/2009 09:53	Firefox Document
swfobject.js	11/11/2009 09:53	JScript Script File
00FY	11/11/2009 14:01	File Folder
37UB	11/11/2009 14:01	File Folder
37UC	11/11/2009 14:01	File Folder

Most of the files belong to the top level dynamic report but you can see three subfolders that contain dynamic reports that will be drilled down to. They have been given folder names that match the codes of the geographic features in the top level dynamic report used to drill down to them. In this example, the Scotland dynamic report contains at least 3 areas with codes of 00FY, 37UB and 37UC and this is reflected in the naming of subfolders.

## 3. The Drill Down Script

Now that your dynamic report folders have been correctly organised and named you can paste in the drill down custom script. This must be added to the atlas.html file of the top level dynamic report in the following way:

1. Navigate to the folder that contains your top level dynamic report and open the atlas.html file using a text editor (e.g. Notepad).
2. You will need to copy the script below and paste it over the current script within your dynamic report.html file.

 Ensure that the script that you replace is within the <body> ... </body> section of the atlas.html file and **not** any other script which may be in the file. This is the script you need to replace:

```
function init()
{
}
```

In an “unedited” dynamic atlas.html file, this will begin at line 122.



The script to copy and paste into atlas.html is the following:

```
function featureListener(eventType, hitFeatures)
{
  if (eventType == "featureDoubleClick")
  {
    window.open("./"+hitFeatures+"/atlas.html", '_blank');
  }
}

function init()
{
  myAtlas.addMapFeatureListener("featureListener");
}
```

### Customising the script

The script like it is above will ensure that the drill down dynamic report will open in a new window. If you wish the drill down dynamic report to open in the same window as the top level dynamic report then you will need to change this code from:

```
window.open("./"+hitFeatures+"/atlas.html", '_blank');
```

to:

```
location.href = "./"+hitFeatures+"/atlas.html";
```

## 4. InstantAtlas Support

You can find all core user guides and a wide range of other InstantAtlas support resources at [www.instantatlas.com/support.xhtml](http://www.instantatlas.com/support.xhtml). InstantAtlas customers can login to their My InstantAtlas account and download a wide range of support resources and access a searchable knowledgebase. If

these resources do not provide a solution, please contact your support provider.